

DESIGN FOCUSED

Iconic design combined with thin round, symmetrical shape for easy handling and precise control.



USABILITY

Left and right double shutter buttons with AE/AF lock

Center lens allows easy shooting from any angle for accurate recreation of the composition of your shot.



Shooting modes for a wider range of expression

•Double exposure

Two shutters go off and the two pictures are combined into one image.



•Bulb

The shutter opens while it is being pressed.



•Macro

From a distance of 10cm.



•Thumbnail Print



Four images



Nine images

Command dial buttons allows a linear series of operations

Use the command dial to perform all operations from editing and processing to printing while looking at the monitor, so that your photos come out just the way you want them.



Other handy features

•Save up to 50 photos in the internal memory. Save even more photos by using a microSD card. •Equipped with date selection function. •A digital zoom of up to 2.4x can be applied to prints. •Rechargeable battery •Tripod hole.



Accessories (sold separately)

- INSTAX SQUARE PICTURE BOOK
- INSTAX SQUARE PHOTO FRAME
- INSTAX SQ10 CAMERA CASE
- INSTAX SQUARE SELFIE MIRROR

FUJIFILM

FUJIFILM Corporation

7-3,AKASAKA 9-CHOME, MINATO-KU, TOKYO 107-0052, JAPAN

instax SQUARE SQ10



SPECIFICATIONS

| Camera | |
|--------------------|--|
| Image sensor | 1/4-in., CMOS with primary color filter |
| Effective pixels | 1920 x 1920 |
| Storage media | Built-in memory, microSD/microSDHC memory card |
| Recording capacity | Built-in memory: Approx. 50 files microSD/microSDHC memory card: Approx. 1000 files per 1 gigabyte |
| File system | Compliant with Design Rule for Camera File System (DCF), Exif Ver.2.3, Compliant with JPEG and PIM |
| Focal length | Fixed as 28.5 mm (35-mm format equivalent) |
| Aperture | F2.4 |
| Auto focus system | Single AF (Contrast-detect TTL, equipped with AF illuminator) |
| Focus range | 10cm to ∞ |
| Shutter speed | 1/29500 sec. to 1/2 sec. (Auto), maximum 10 sec. in Bulb mode |
| Sensitivity | ISO 100 to 1600 (Auto) |
| Exposure control | Programmed AE |
| Metering | 256-segment through the lens (TTL) metering, Multi metering |
| White balance | Auto |
| Flash | Auto/Compulsory flash/Suppressed flash/Slow synchro/Red-eye removal Effective range: Approx. 50 cm to 8 m |
| Shooting mode | Standard, Double exposure, Bulb mode |
| Self-timer | Approx. 10 sec./Approx. 2 sec. |
| Image effect | 10 Filters, Brightness adjustment, Vignette |
| Playback function | Trimming, Multi image playback |

| Printer | |
|------------------------|--|
| Film | FUJIFILM Instant Film "instax SQUARE" (Purchased separately) |
| Photo capacity | 10 prints/pack |
| Film size | 86 mm x 72 mm |
| Image size | 62 mm x 62 mm |
| Supported image size | 800 x 800 dots |
| Printing resolution | 12.5 dots/mm (318 dpi, 80 µm dot pitch) |
| Printing levels | 256 levels per color (RGB) |
| Supported image format | JPEG (Some images saved with a photo editing/processing software may not be displayed or printed.) |
| Printing time | Approx. 12 seconds |
| Print timing | Printing shortly after shooting/Printing after selecting image |
| Printing function | Images on built-in memory/micro SD card |
| Reprint | Printable up to the past 50 prints (Up to 50 images stored in print history) |
| Digital zoom | Up to 2.4 X in printing (Output pixels: 800 x 800) |
| Film detection | Yes (Automatic ejection when inserted) |

| Others | |
|------------------------|--|
| LCD monitor | 3.0-in. (7.6 cm) TFT color LCD monitor Pixels: Approx. 460k-dots |
| Input/Output terminals | Micro USB (For charging only) |
| Battery | NP-50 |
| Charging function | Built-in |
| Printing capacity | Approx. 160 prints (From when the battery is charged fully) *Varies depending on the conditions of use. |
| Charging time | Approx. 3 to 4 hours (Using 0.5 A USB port) *Varies depending on air temperature. |
| Dimension | 119 mm x 47 mm x 127 mm (W x D x H) |
| Weight | 450 g (includes film pack and battery) |

* Specifications above are subject to change for improvement.

FUJIFILM Instant Film

instax SQUARE

- Photo capacity 10 prints/pack
- Film size 86 mm x 72 mm
- Image size 62 mm x 62 mm



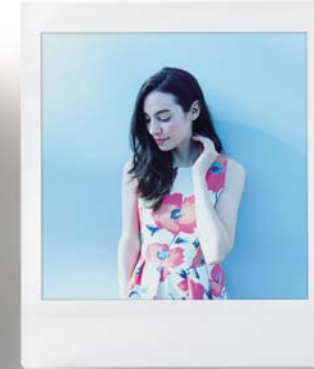
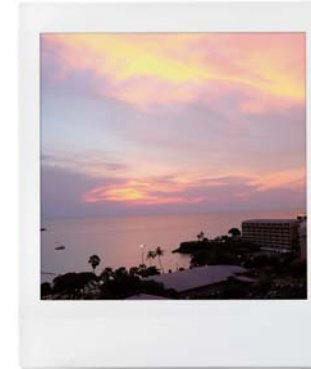
instax.com

Ref. No. RB-1702E(SK-17-3-F1079) ©2017 FUJIFILM Corporation

FUJIFILM

Value from Innovation

RELEASE YOUR CREATIVITY



instax SQUARE SQ10

HYBRID INSTANT CAMERA
[INSTANT PRINT + DIGITAL TECHNOLOGIES]



Shoot to thrill.
Instant beautiful fun,
at your command.

Express your creativity in an instant, with stunning direct prints from the new hybrid instax SQUARE SQ10. This camera lets you capture those 'once in a lifetime' memories and moments beautifully, in a stylish square format.

And because it's a hybrid, you get the best of both worlds – the control and composition of a digital camera, with the enjoyment and tangible fun of a real photo print.

What will you capture first?

instax SQUARE SQ10

CREATE YOUR EDGE.



SQUARE FORMAT

instax's first square format

Square photos are enjoying retro look and the perfection of 1:1 aspect that adds sophistication to every photo, no matter what the composition. Enjoy a wider range of uses and forms of expression.



actual size Full film size: 86 x 72mm Screen size: 62 x 62mm



HYBRID INSTANT CAMERA



- Photos you've taken can be printed any time, as many times as you want - whatever works for you!
- Save your photos to the internal memory or storage media so that you can view them whenever you want, then print your favorites.
- In addition to reprints, you can find images from the print history and print them again*1.

*1: The last 50 printed photos are saved to the print history and can be reprinted from there.

- Have fun with image effects (filters, vignettes, brightness adjustment) before or after printing.
- Comes with a TFT color LCD monitor so you can edit and process images to create just the look you want. The split display allows you to view images and print them as displayed on the screen.
- You can also save other images to storage media (microSD card), edit and print from SQ10.



10 Filters



Brightness Control



Vignette Control

