

FUJIFILM
Value from Innovation



instax WIDE 300

INSTANT CAMERA

New

Actual Size

Capture
your precious
moments wider



Wide format photography is fun when people get together

This large film is well suited to photography at parties and other gatherings. Everybody's facial expressions are clearly shown.

Twice as wide as "instax mini" film



instax WIDE film (86 x 108 mm)



instax mini film (86 x 54 mm)

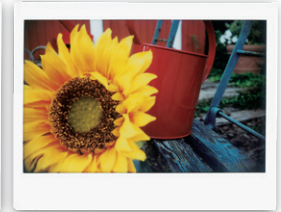
Wide format instant photos

Great for photographic artwork and business purposes as well as parties and other events.



Close-up lens for shots up to 40 cm from the subject

The accompanying close-up lens expands the range of photo shooting.



Many easy-to-use functions

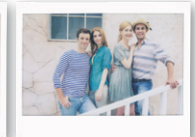
- "Automatic flash for low-light shooting" optimizes the luminescence in accordance with the distance.
- Use backlighting to enhance your photos thanks to the "Fill-in flash by flash-on button."
- "Exposure compensation (Lighten-Darken Control)" enables you to get just the right mood.



D (Dark)



N (Normal)



L (Light)

Improved ease of use as a camera

Tripod socket

Useful for group photos



Focal zoom dial

- 90 cm - 3 m
- 3 m - ∞



User-friendly Interface

- Rear mounted LCD
- Flash and brightness control buttons



Various ways to enjoy instax wide prints.



instax WIDE 300 Specifications

- **Film** Fujifilm Instant Color Film "instax WIDE"
- **Film Size** 86 mm x 108 mm
- **Picture Size** 62 mm x 99 mm
- **Lens** Retractable lens, 2 components, 2 elements, f = 95 mm, 1:14
- **Viewfinder** Real image finder, 0.37 x, with target spot
- **Focusing** Motor-driven 2-range switching (0.9 m - 3 m/3 m - ∞) Normal Mode (0.9 m - 3 m) Landscape Mode (3 m - ∞)
- **Shutter Release** Programmed electronic shutter release, 1/64 sec - 1/200 sec.
- **Exposure Control** Automatic, Interlocking range (ISO 800) : LV 10.5 - LV 15 Exposure compensation (Lighten-Darken Control) : ±2/3 EV
- **Film Feeding Out** Automatic
- **Flash** Built-in, automatic electronic flash, Charging time: 0.2 sec - 6 sec (using a new battery), Flash charging indicator (LED lights in red), Fill-in Flash Mode, Effective flash lamp range: 0.9 m - 3 m
- **Liquid Crystal Display (LCD)** Exposure counter (number of unexposed films), Lighten-Darken control, Fill-in Flash Mode
- **Power Supply** Four size AA 1.5 V alkaline batteries (LR6), Capacity : 10 film packs (Based on our test conditions)
- **Others** With film pack confirmation window, close up lens, and tripod socket included
- **Dimensions & Weight** 167.8 mm x 94.7 mm x 120.9 mm (not including protrusions) / 612 g (without battery, strap, film pack, and close up lens)

• The photos printed in this catalog were taken by instax WIDE. •Specifications and appearance of products are subject to change without notice.
• The colors of the actual camera may be different from those used in this catalog due to various conditions for printing.
• FUJIFILM and Instax are trademarks of FUJIFILM Corporation and its affiliates. ©2014 FUJIFILM Corporation and its affiliates. All Rights Reserved.

GLOBAL **instax.com**

FUJIFILM

FUJIFILM Corporation

7-3,AKASAKA 9-CHOME, MINATO-KU, TOKYO 107-0052, JAPAN